



# **CONSULTATION DRAFT BLUNSDON - EAST NEIGHBOURHOOD PLAN (BENP)**

**2019**

**APPENDIX H**

**Decision Notice**

## SWINDON BOROUGH COUNCIL

### Regulation 7 - Neighbourhood Planning (General) Regulations 2012

#### Decision Notice: Designation of a Neighbourhood Area

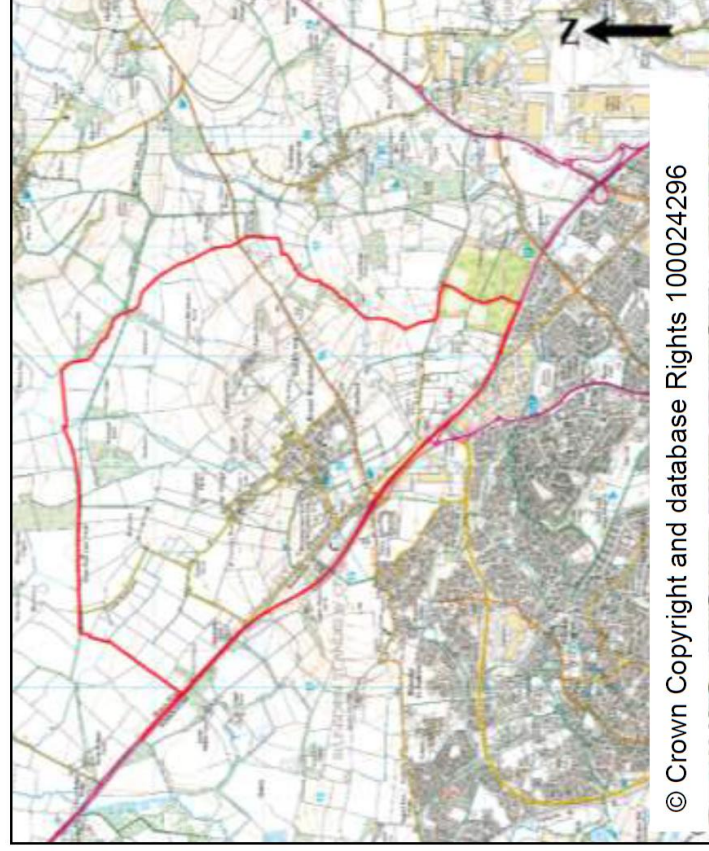
##### Blunsdon St Andrew – East Neighbourhood Area

Swindon Borough Council (“the Council”) in exercise of its power under section 61G of the Town and Country Planning Act 1990 (as amended) has made a decision to designate Blunsdon St Andrew – East Neighbourhood Area as a neighbourhood area.

The Council, following a consultation that was held from 30<sup>th</sup> May 2013 to 11<sup>th</sup> July 2013, pursuant to Regulation 6 of the Neighbourhood Planning (General) Regulations 2012, is satisfied that the area is appropriate to be designated as a neighbourhood area.

1. The Name of the Neighbourhood Area: Blunsdon St Andrew – East Neighbourhood Area
2. Map which identifies the Neighbourhood Area: The area illustrated by a red boundary (see below)
3. Name of the relevant body who applied for the designation: Blunsdon St Andrew Parish Council

##### Map of the Designated Blunsdon St Andrew – East Neighbourhood Area



Map not to Scale

R. Bell  
Head of Planning, Service Delivery  
Swindon Borough Council  
Civic Offices  
Beckhampton Street  
Swindon, SN1 2JH  
Dated: Monday 5<sup>th</sup> August 2013